



What's the Scoop?

Tips for a healthy pet
and a healthier environment



The City of Los Angeles Stormwater Program, in partnership with the Department of Animal Services, has prepared this guide on how to keep your pets (and our other furry friends) healthy and safe—AND help preserve our neighborhood and marine environments.

Create a healthy environment in and around your home by following these simple pet practices. Your pet, family and neighbors will appreciate their clean comfortable surroundings

For more information on City of Los Angeles services for a healthy pet and a healthier environment, please call the phone numbers listed in this pamphlet.

Maintain your automobile and dispose of used fluids properly. Pets can be poisoned if they ingest gas, oil or antifreeze that drips onto the pavement or is stored in open containers.

Call the Household Hazardous Waste Hotline for information on proper disposal.



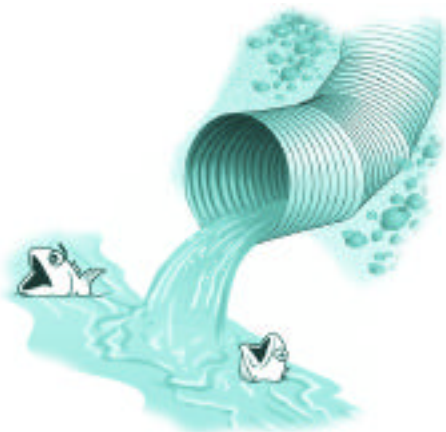
Spay or neuter your pets. There aren't enough homes for the many puppies and kittens born each day. Low-cost spay and neuter vouchers are available from the City of Los Angeles Department of Animal Services.

Vaccinate your pets to protect them from disease. License your pets to protect them from loss. Vaccination clinics and dog licenses are available through the City of Los Angeles Department of Animal Services.



When walking your dog, always carry a pooper scooper or plastic bag with you to pick up your pet's waste. It is a neighborhood nuisance that can wash into gutters and storm drains carrying dangerous diseases into our rivers and ocean (L.A.M.C. Sec. 53.49).

Properly dispose of pet waste by flushing it down the toilet or placing it in the trash.



Change your pet's food and water regularly to avoid pest infestation.



Leftover food in and around your home can attract unwanted pests, insects and disease.

Adopt a pet from a City of Los Angeles Animal Services Center. A variety of animals, from purebreds to mixed breeds are waiting for loving arms and good homes.



Wash pets indoors in a bathtub or sink using less toxic shampoos, or consider having your pet professionally groomed. Pet shampoos and soaps, even when biodegradable, can be toxic to humans.



Consider using less toxic alternatives such as oral or topical flea control products. If you do use flea control products such as shampoos, sprays or collars, please dispose of unwanted quantities properly. Call the Household Hazardous Waste Hotline for more information.

IMPORTANT CITY OF LOS ANGELES PHONE NUMBERS

Stormwater Program
(800) 974-9794
www.lacity.org/san/swmd

Department of
Animal Services
(888) 4LA-PET1

Household Hazardous Waste Hotline
(800) 98-TOXIC



This pamphlet was produced by the
City of Los Angeles' Stormwater Program
in partnership with the Department of Animal Services