

MACHADO LAKE ECOSYSTEM REHABILITATION AND WILMINGTON DRAIN MULTI-USE PROJECT

LINKS

Machado Lake Recommended Project

[Recommended Project Elements](#)

[Aerial Map of Recommended Project](#)

Wilmington Drain Multi-Use Recommended Project

[Recommended Project Elements](#)

[Aerial Map of Recommended Project](#)

Other Project Information

[Project Location](#)

[Project Background](#)

[Project Schedule](#)

GOOD NEWS!

A recommended design has been developed for the Machado Lake – Wilmington Drain Prop O Project.

After a year of intense pre-design planning and community meetings, a major step has been taken in the rehabilitation of treasured Machado Lake in Ken Malloy Harbor Regional Park and the Wilmington Drain, the greenbelt that is the largest water source for the lake. With \$117



million allocated from Proposition O funds, the project team has recommended a design for Machado Lake and the Wilmington Drain. The City of Los Angeles Bureau of Engineering, Bureau of Sanitation, and the Department of Recreation and Parks, in coordination with other City departments and Los Angeles County, have worked closely with the public over the past year to develop a recommended final project design. Thank you to everyone who contributed ideas and insights to improve water quality, visual aesthetics, and the biological diversity of the Wilmington Drain and the lake's ecosystem and channel.

Machado Lake Ecosystem Rehabilitation

The project team studied many great design concepts for the Machado Lake ecosystem. Various components from multiple alternatives to rehabilitate Machado Lake were combined to create the recommended project that is being carried forward into the design phase. This integrated design was presented at a community meeting held on July 1, 2009 at the Kaiser Permanente Hospital in Harbor City.

The major elements include:

- Invasive plant species removal throughout Ken Malloy Harbor Regional Park
- Installation of Smart Irrigation Controllers
- Construction of lake edge landscaping to treat surface runoff before it enters the lake
- Planting of emergent and submersed rooted aquatic plants along the near-shore areas
- Lake dredging to maintain a lake depth of approximately eight feet and to remove sediment affecting the health of the lake
- Lake augmentation with supplemental water (recycled water from the Terminal Island Water Reclamation Plant will be used with potable water available as a back up when needed)
- Construction of a lake aeration system and use of alum injections as necessary
- Offline-treatment wetland
- Installation of continuous deflection separation (CDS) units at storm drain D24010 and at the Figueroa Drain
- Installation of a gross solid removal device (GSRD) at Project 77 Construction of bioengineered vegetative swales
- Runoff capture area in the riparian woodland
- Flow channels through the riparian woodland and lower freshwater marsh
- Improvements to the earthen dam
- Creation of three additional acres of wetlands
- Creation of recreational and interpretive improvements

Machado Lake Recommended Alternative



Legend

- CDS[®] System
- Land-Based Compressor
- Supplemental Water
- Drainage Channel
- Containment Berm
- Vegetated Swale
- Alum Injection System
- Aeration System
- Existing Storm Drain
- GSRD Unit
- Pump House
- Energy Dissipator
- Vegetated Berm

- In-Lake Sediment Traps
- Non-Native Grasslands Replaced with Southern Tarpant in Select Areas (approximate boundary)
- Coastal Sage Scrub Upland Enhancement
- Off-Line Treatment Wetland (approximate boundary)
- Freshwater Marsh Wetlands
- Runoff Capture Area

Proposed Lake Bathymetry

- 2' MSL
- 3' MSL
- 3.5' MSL
- 4' MSL
- 7' MSL
- 10' MSL

Notes:

1. Includes park design improvements and smart irrigation.
2. Includes lake dredging
3. Includes supplemental water (recycled or potable).
4. Includes dam improvements.
5. Includes invasive plant removal in the riparian woodland and freshwater marsh.
6. Includes in-lake Ludwigia removal.
7. Includes aquatic plant management and littoral zone enhancements.
8. Includes constructed islands (aquatic or terrestrial).
9. Includes alum treatment, as necessary.
10. Includes shoreline stabilization.

Wilmington Drain Multi-use Project

The Wilmington Drain is a flood control structure that provides important biological resources. The recommended project design elements for the Wilmington Drain project include:

- Invasive plant species removal from the Drain's banks and in-channel island
- Creation of a nature-oriented park with walking trails and educational opportunities located on the west bank of the Drain, south of Lomita Blvd.
- Installation of interpretive signage at major park access points
- Creation of a new parking lot south of Lomita Blvd.
- Channel excavation and re-grading to provide increased hydraulic capacity
- Sediment removal
- Installation of two trash netting systems located at the Project 510 storm drain and at the outlet of the concrete lined portion of the Wilmington Drain
- Installation of porous pavement in the new parking lot
- Installation of trash receptacles at major park access points
- Installation of Smart Irrigation controllers



Where is this Prop O project located?

The Machado Lake ecosystem – including the Wilmington Drain – is located in and adjacent to the Wilmington and Harbor City communities of the City of Los Angeles. The Machado Lake project site is located just west of the 110 freeway in the Ken Malloy Harbor Regional Park. The Wilmington Drain project site is located just north of the park on the north side of Pacific Coast Highway. Check out the map below for more specific information.

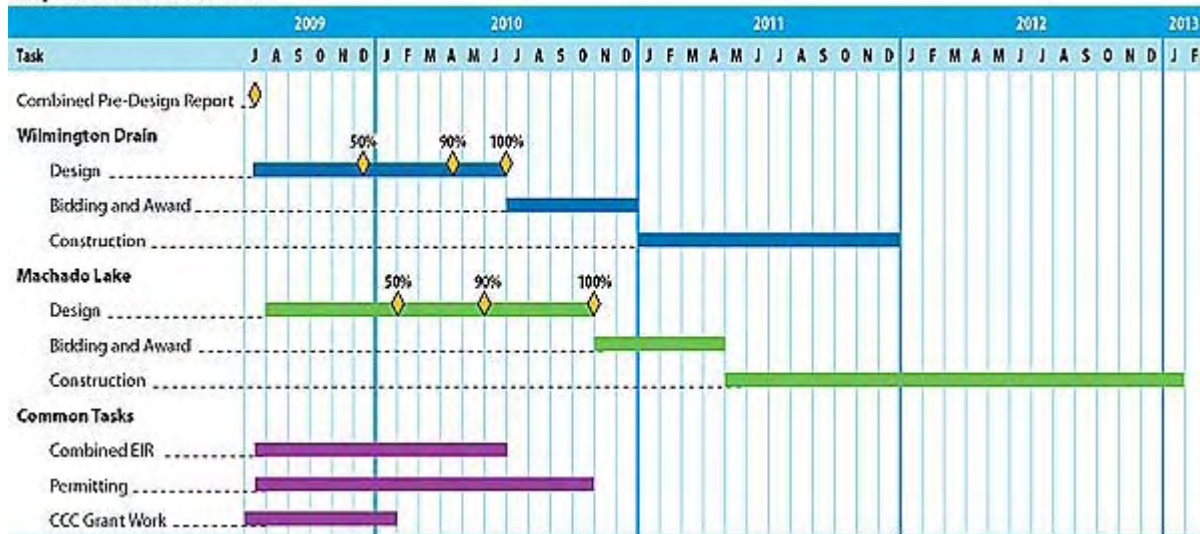


Project Background

In 2004, residents of Los Angeles passed Proposition O, a \$500-million bond measure to improve water quality for water bodies within the City. The City of Los Angeles Bureau of Sanitation identified Machado Lake and the Wilmington Drain as two locations within the City that qualified for Proposition O funding, and prepared Concept Reports for both the Machado Lake and Wilmington Drain projects in December 2006. These reports identified the project concepts and funding needed for design and construction of both projects. Based on the recommendations of the Citizens Oversight Advisory Committee (COAC) and Administrative Oversight Committee (AOC), the Los Angeles City Council allocated \$117 million of Proposition O funding to the combined Machado Lake Ecosystem Rehabilitation - Wilmington Drain Multi-use project.

Project Schedule

Implementation Schedule



More information on this project can be found at www.LAPropO.org. In the left-hand column, guide your cursor over the box titled "Major Prop O Projects," then click on "Machado Lake."

For More Information:



City of Los Angeles
 Department of Public Works
 Becky Wood at 213-590-0117
 Email: rebeccajewood@yahoo.com

UNSUBSCRIBE FROM FUTURE NEWSLETTERS.